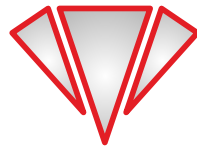




IBIX[®]
SPECIAL CLEANING



TRILOGY 28

**DOUBLE OPERATING (WET/DRY) AIR-CLEANER
FOR AN ECO-FRIENDLY CLEANING,
MICRO-AIR-ABRASIVE, SODA BLASTING.**

Available equipment:

- Compressed-air pipe + inert + water (length: 3 m + 10 m extension cord) with "Quick Connect" quick-fixing.
- Double gun: H₂O + HELIX[®] patented system
- Conical bottom tank: it improves the inert's flux and avoid different inerts contamination.
- Blend's valve with Tungsten Carbide hose-fitting (high abrasion resistance) and "Quick Connect" fixing system.

Optional:

- HELIX[®] cones kit (Ø int. mm 4-6)
- Cylindrical nozzles Box (Ø 2-4,5 mm) and Venturi (Ø 2,5-4 mm)
- Nozzle kit "Long Nozzle" in order to increase the abrasive jet intensity [available with 3mm cylindrical diameter – 4mm Venturi]*.



* The "Long Nozzle" is essential for the IBIX[®] extractor fans' use.

TECHNICAL FEATURES

- Pressure adjustable from 0.2 to 7.5* bar
- Micrometric dosing of the blasting material
- Particles can range in size from 38 µm up to 1400 µm and have different specific gravity (from Natural Mineral Almandine to Sodium Bicarbonate, Calcium Carbonate, Magnesium Carbonate, glass beads and vegetal media)
- Recommended compressed air supply: 1500 l/min [53 CFM]
- Standard nozzle: internal Ø 5.5 mm
- cylindrical with DRY and H₂O guns; internal Ø 6 mm Venturi with HELIX gun
- Other applicable nozzles: internal Ø 1.5-2-2.5-3-3 L.115-3.5-4-4.5-5.5 L.115-7 mm cylindrical and 2.5-4-4 L.115-5-6-6 L.115 mm Venturi with DRY and H₂O guns; internal Ø 2-3-4 mm selective and 2-3-4-8 mm Venturi with HELIX gun
- Blasting medium - air hose with protective sheath: 10 m
- Blasting medium tank capacity: 28 l
- Max height: 990 mm
- Max width: 316 mm
- Max length: 426 mm
- Weight [with empty tank]: 30 Kg approx.

* Depending on the compressor

HELIX[®]



**DOUBLE GUN
PROVIDED**

Архангельск (8182)63-90-72 Астана +7(7172)727-132 Белгород (4722)40-23-64 Брянск (4832)59-03-52 Владивосток (423)249-28-31 Волгоград (844)278-03-48 Вологда (8172)26-41-59 Воронеж (473)204-51-73 Екатеринбург (343)384-55-89 Иваново (4932)77-34-06 Ижевск (3412)26-03-58 Казань (843)206-01-48 Калининград (4012)72-03-81 Калуга (4842)92-23-67 Кемерово (3842)65-04-62 Киров (8332)68-02-04 Краснодар (861)203-40-90 Красноярск (391)204-63-61 Курск (4712)77-13-04 Липецк (4742)52-20-81 Магнитогорск (3519)55-03-13 Москва (495)268-04-70 Мурманск (8152)59-64-93 Набережные Челны (8552)20-53-41 Нижний Новгород 429-08-12 Новокузнецк (3843)20-46-81 Новосибирск (383)227-86-73 Орел (4862)44-53-42 Оренбург (3532)37-68-04 Пенза (8412)22-31-16 Пермь (342)205-81-47 Ростов-на-Дону (863)308-18-15 Рязань Петербург (812)309-46-40 Саратов (845)249-38-78 Смоленск (4812)29-41-54 Сочи (862)225-72-31 Ставрополь (8652)20-65-13 Тверь (4822)63-31-35 Томск (3822)98-41-53 Тула (4872)74-02-29 Тюмень (3452)66-21-18 Ульяновск (8422)24-23-59 Уфа (347)229-48-12 Челябинск (351)202-03-61 Череповец (8202)49-02-64 Ярославль (4852)69-52-9333

Единый адрес для всех регионов: ixb@nt-rt.ru | www.ibix.nt-rt.ru



IBIX® H₂O SELECTIVE CLEANING SYSTEMS

Double operating wet/ dry technology that allows to vaporise the exiting water with carbonates and other minerals.

IBIX® H₂O systems are provided with quick-fixing for an easier connection to the water supply network or to a water tank.

In the preservative restoration, IBIX® H₂O System allows to fill any clearing need, offering high-standard performances in terms of quality and quantity results.

As well as high performances for the urban decor (graffitis, chewinggums, etc... removal).

CLEANING SYSTEM WITH HELIX® SPINNING COIL VORTEX

A combination of Venturi effect is created by the special outbound conic shape and its spinning coil vortex movement allows to significantly reduce the compressed air demand and to increase the contact area.

The use of special wearing Tungsten-carbonate-based steels allows to design durable nozzles which can also resist to heavy abrasives.



IBIX® ECOLOGICAL INERTS

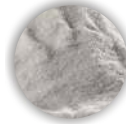
IBIX® method is based on the environment and surfaces respect. For this reason IBIX® has developed a solo eco-friendly and low environmental impact technology.

IBIX® equipments offer a wide range of ecological inerts that guarantee the greatest eco-friendly operative efficiency.



IBIX® ART

Perfect for timbers sandblasting



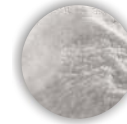
CARBON ART

Calcium Carbonate, selected material for stone surfaces cleaning



GLASS MICROSPHERES

Cleaning, metals grinding, glazing, shot peening or welding finishing



BAKING SODA

Efficient and uniform cleaning



ECOSHELL INERTS OBTAINED FROM PLANTS

Ecological cleaning and brushing without altering the surface



REFERENCES

IMPERIAL FORUMS (I CENTURY A.D.), ROME - Cleaning of stone and travertine faces
 ST. PETER'S BASILICA, VATICAN CITY - Restoration of the Bernini Colonnade
 LOUVRE MUSEUM (XIII CENTURY A.D.), PARIS - Cleaning of sandstone
 EIFFEL TOWER (XIX CENTURY A.D.), PARIS - Cleaning of the stone pillars
 PETER'S GATE (XVIII CENTURY A.D.), SAINT PETERSBURG - Cleaning of stone
 NOTO CATHEDRAL (XVIII CENTURY A.D.) - Cleaning of limestone
 ITALIAN EMBASSY IN ISTANBUL, TURKEY - Cleaning and removal of protective coating with IBIX® Art dry and mineral method
 DOLMABAŦE PALACE, ISTANBUL - Dry cleaning with spray water
 SAINT ANTHONY BASILICA (XIII CENTURY A.D.) - Cleaning of the colonnade, statue and bricks
 CATHEDRAL OF LUCERA (XVI CENTURY A.D.) - Cleaning of bricks and sandstone

BMW
 DAIMLER MERCEDES
 BRITISH PETROLEUM
 INSTITUT DU PÉTROLE - FRANCE
 TECHNICENTRE SNCF (FRENCH RAILWAY TRANSPORTS)
 TRENITALIA
 DAEWOO - KOREA
 HYUNDAI - KOREA
 CODELCO MINES, CHILE
 SANDBLASTING ANS COATING SOCIETY FOR PETROBRAS - BRAZIL
 TURNER INDUSTRIES - BATON ROUGE, LOUISIANA (USA)
 CEA (ATOMIC ENERGY AND ALTERNATIVE ENERGIES COMMISSION) - FRANCE
 AREVA (NUCLEAR) - FRANCE
 BONDUELLE - FRANCE
 JÄGERMEISTER - GERMANY
 KELLOGG'S - UNITED KINGDOM
 NONNO NANNI (DAIRY FACTORY) - ITALY
 FOOD INDUSTRY COOP CHAIN - ITALY

Архангельск (8182)63-90-72 Астана +7(7172)727-132 Белгород (4722)40-23-64 Брянск (4832)59-03-52 Владивосток (423)249-28-31 Волгоград (844)278-03-48 Вологда (8172)26-41-59 Воронеж (473)204-51-73 Екатеринбург (343)384-55-89 Иваново (4932)77-34-06 Ижевск (3412)26-03-58 Казань (843)206-01-48 Калининград (4012)72-03-81 Калуга (4842)92-23-67 Кемерово (3842)65-04-62 Киров (8332)68-02-04 Краснодар (861)203-40-90 Красноярск (391)204-63-61 Курск (4712)77-13-04 Липецк (4742)52-20-81 Магнитогорск (3519)55-03-13 Москва (495)268-04-70 Мурманск (8152)59-64-93 Набережные Челны (8552)20-53-41 Нижний Новгород 429-08-12 Новокузнецк (3843)20-46-81 Новосибирск (383)227-86-73 Орел (4862)44-53-42 Оренбург (3532)37-68-04 Пенза (8412)22-31-16 Пермь (342)205-81-47 Ростов-на-Дону (863)308-18-15 Рязань Петербург (812)309-46-40 Саратов (845)249-38-78 Смоленск (4812)29-41-54 Сочи (862)225-72-31 Ставрополь (8652)20-65-13 Тверь (4822)63-31-35 Томск (3822)98-41-53 Тула (4872)74-02-29 Тюмень (3452)66-21-18 Ульяновск (8422)24-23-59 Уфа (347)229-48-12 Челябинск (351)202-03-61 Череповец (8202)49-02-64 Ярославль (4852)69-52-9333

Единый адрес для всех регионов: ixb@nt-rt.ru || www.ibix.nt-rt.ru